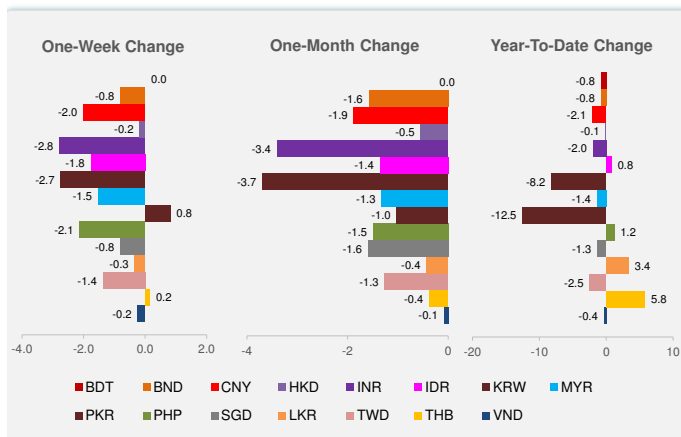
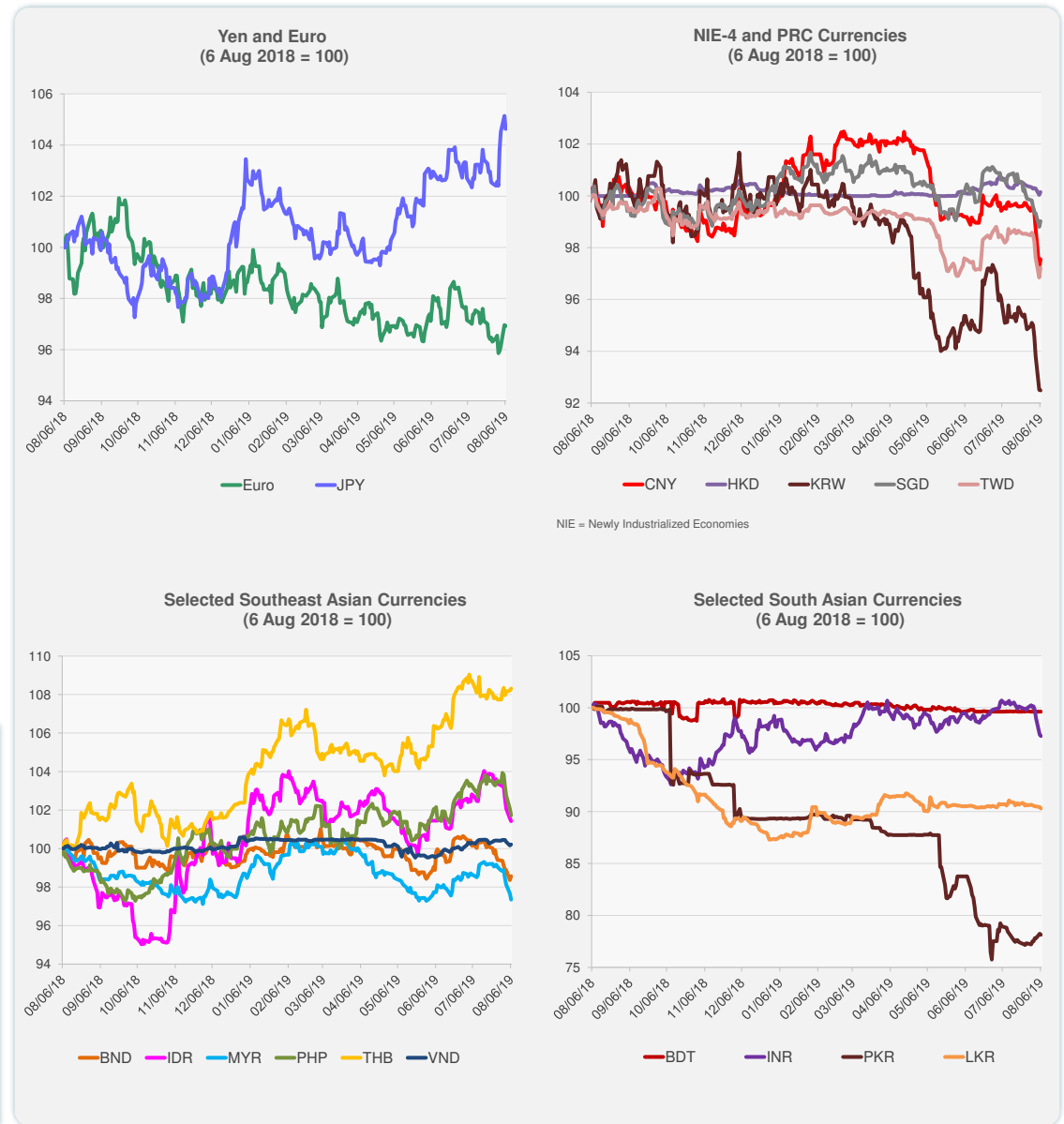


	Latest Closing	% change from Previous Day	% change from 01-Jan-19
Euro	0.89	-0.04	-2.32
Japanese yen (JPY)	106.47	-0.49	3.07
Bangladeshi taka (BDT)	84.53	0.00	-0.77
Brunei dollar (BND)	1.38	0.21	-0.79
Chinese yuan (CNY)	7.03	0.36	-2.09
Hong Kong dollar (HKD)	7.84	0.11	-0.08
Indian rupee (INR)	70.83	-0.13	-1.97
Indonesian rupiah (IDR)	14,277.00	-0.15	0.79
Korean won (KRW)	1,215.25	-0.02	-8.18
Malaysian ringgit (MYR)	4.19	-0.32	-1.37
Pakistan rupee (PKR)	158.75	-0.13	-12.52
Philippine peso (PHP)	51.96	-0.34	1.19
Singapore dollar (SGD)	1.38	0.22	-1.33
Sri Lanka rupee (LKR)	176.90	-0.14	3.36
Taipei,China NT dollar (TWD)	31.50	0.40	-2.50
Thai baht (THB)	30.77	0.10	5.80
Vietnamese dong (VND)	23,258.00	0.05	-0.36

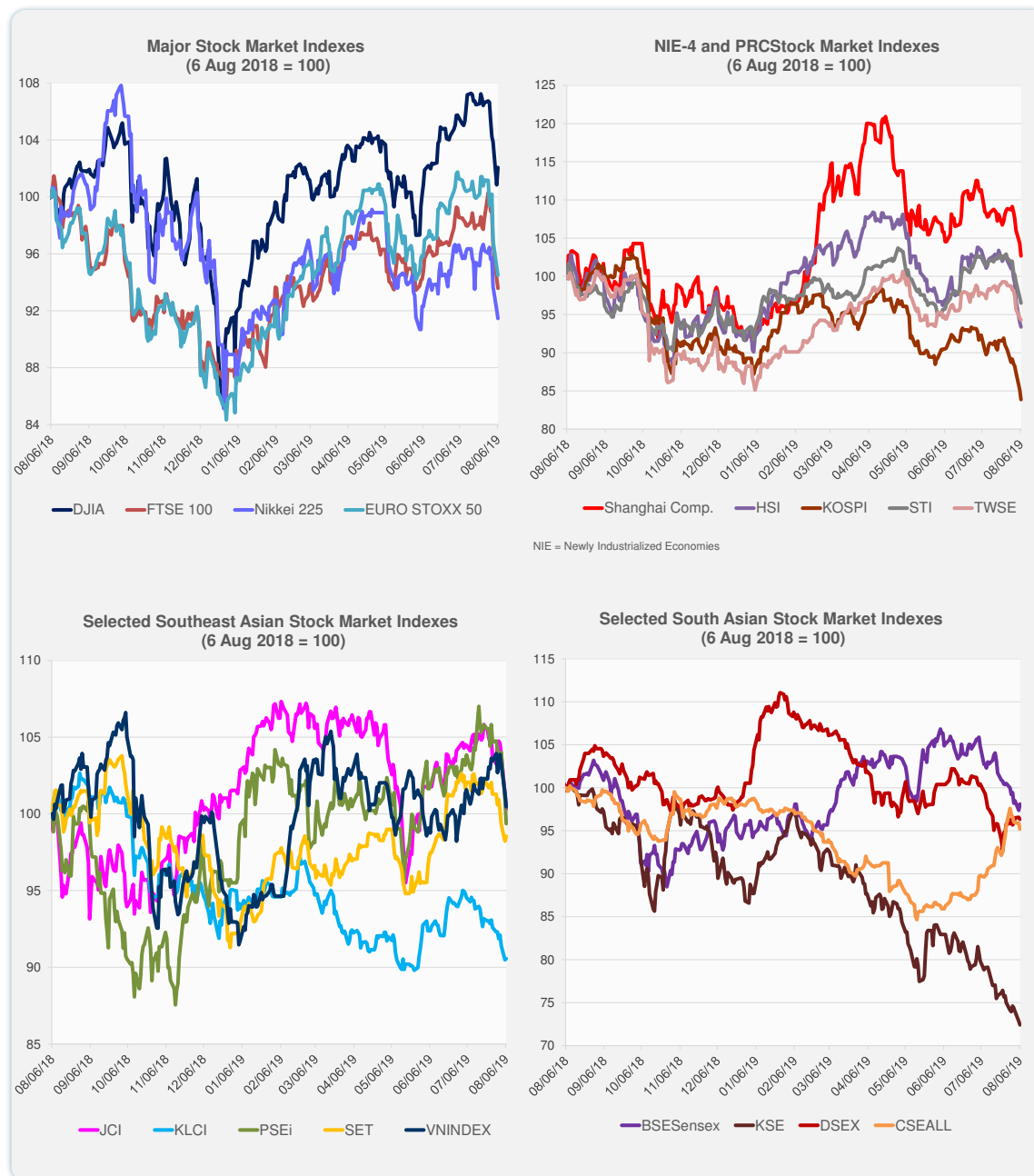
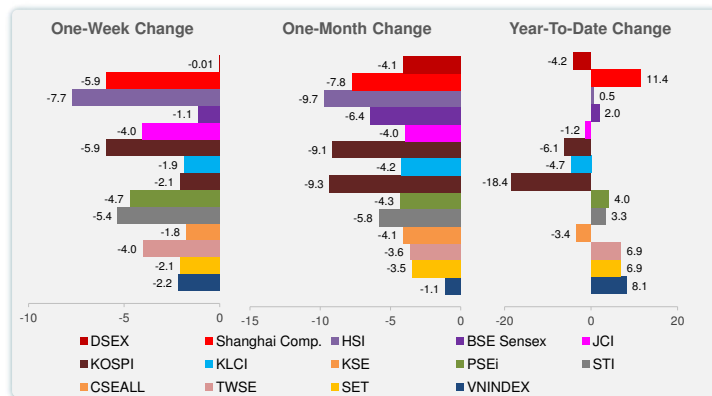


Note: Negative/Decreasing values indicate depreciation of local currency, and positive/increasing values indicate appreciation.  
Source: Bloomberg.



Source: Bloomberg.

	Latest Closing	% change from Previous Day	% change from 01-Jan-19
US Dow Jones Ind Avg	26,029.52	1.21	11.58
US NASDAQ	7,833.27	1.39	18.05
US S&P 500	2,881.77	1.30	14.96
UK FTSE 100	7,171.69	-0.72	6.59
EURO STOXX 50	3,291.66	-0.58	9.67
Japan NIKKEI 225	20,585.31	-0.65	2.85
Bangladesh DSEX	5,160.37	-0.24	-4.18
PRC Shanghai Comp.	2,777.56	-1.56	11.37
Hong Kong, China HSI	25,976.24	-0.67	0.51
India BSE Sensex	36,976.85	0.75	1.99
Indonesia JCI	6,119.47	-0.91	-1.21
Korea, Rep. of KOSPI	1,917.50	-1.51	-6.05
Malaysia KLCI	1,611.79	0.09	-4.66
Pakistan KSE 100	31,000.67	-0.58	-18.41
Philippines PSEi	7,766.75	-1.56	4.03
Singapore STI	3,170.47	-0.75	3.31
Sri Lanka CSEALL	5,846.94	-0.73	-3.39
Taipei, China TWSE	10,394.75	-0.27	6.86
Thailand SET	1,671.48	0.33	6.88
Viet Nam VNINDEX	964.61	-0.88	8.07



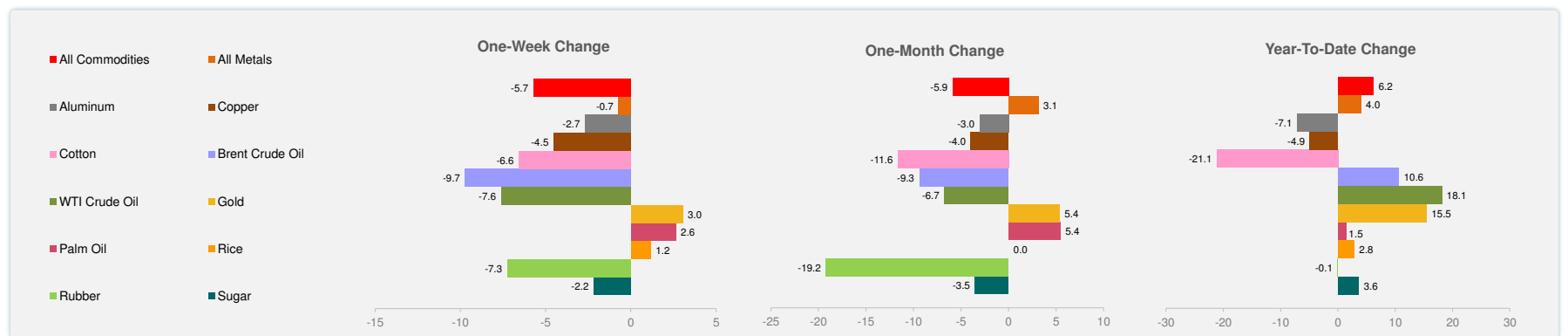
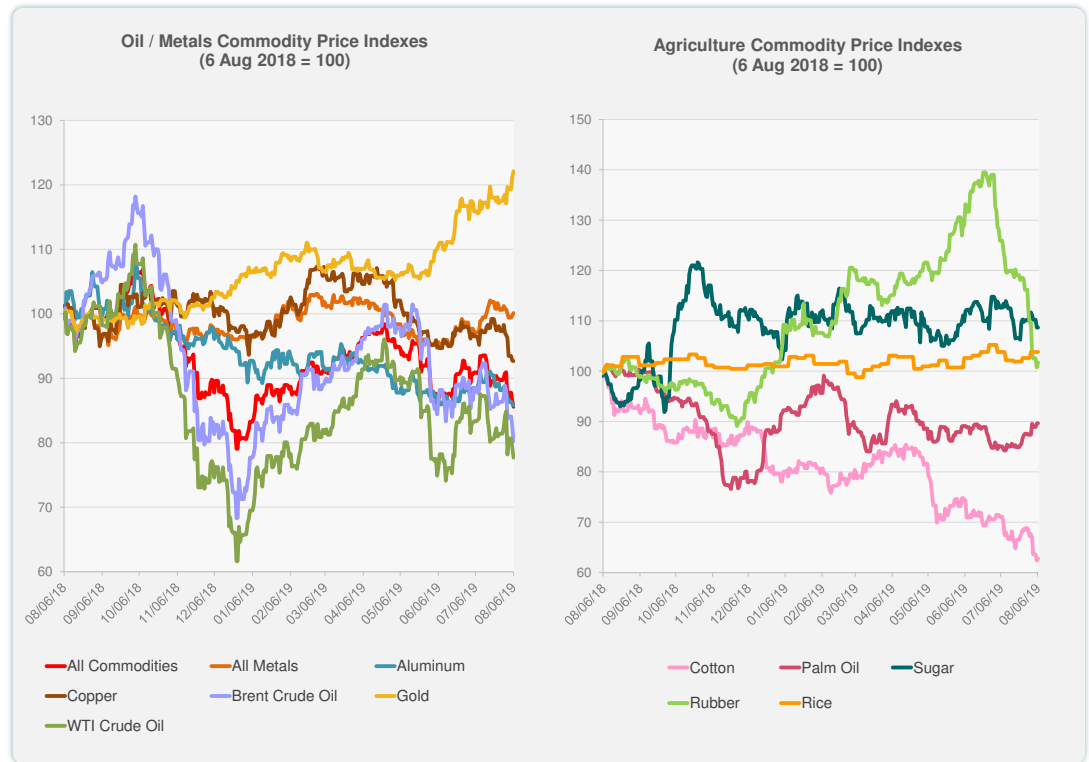
Source: Bloomberg.



Source: Bloomberg.

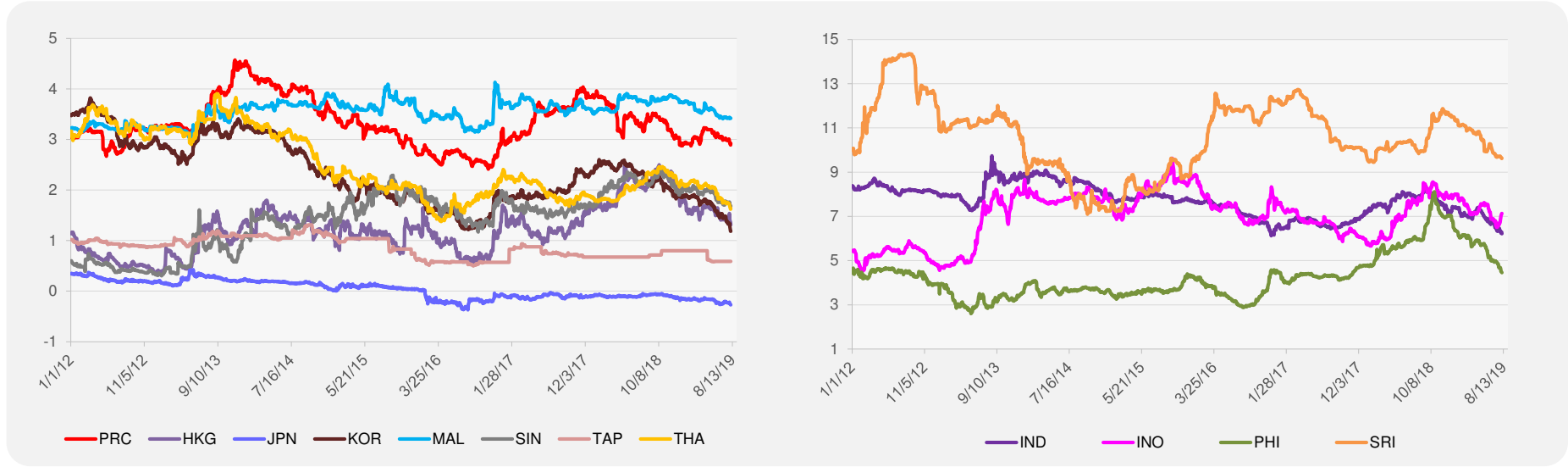
	Unit	Latest Closing	% change from Previous Day	% change from 01-Jan-19
S&P All Commodities	US\$	397.52	-1.09	6.20
S&P All Metals	US\$	212.43	0.35	4.01
Aluminum	US\$/metric ton	1,729.75	-0.26	-7.14
Copper	US\$/metric ton	5,656.25	-0.07	-4.92
Cotton	US cents/lb	54.77	0.66	-21.14
Brent Crude Oil	US\$/barrel	58.43	-2.78	10.62
WTI Crude Oil	US\$/barrel	53.63	-1.94	18.10
Gold	US\$/troy oz	1,474.40	0.73	15.45
Palm Oil	US\$/metric tonne	479.36	0.08	1.48
Rice <sup>1</sup>	US\$/metric ton	436.00	0.00	2.83
Rubber <sup>2</sup>	US\$/kg	148.40	0.95	-0.07
Sugar	US cents/lb	12.56	0.00	3.63

<sup>1</sup> Latest closing price from 31 July 2019.  
<sup>2</sup> Singapore Exchange, Ribbed Smoked Sheet Rubber.

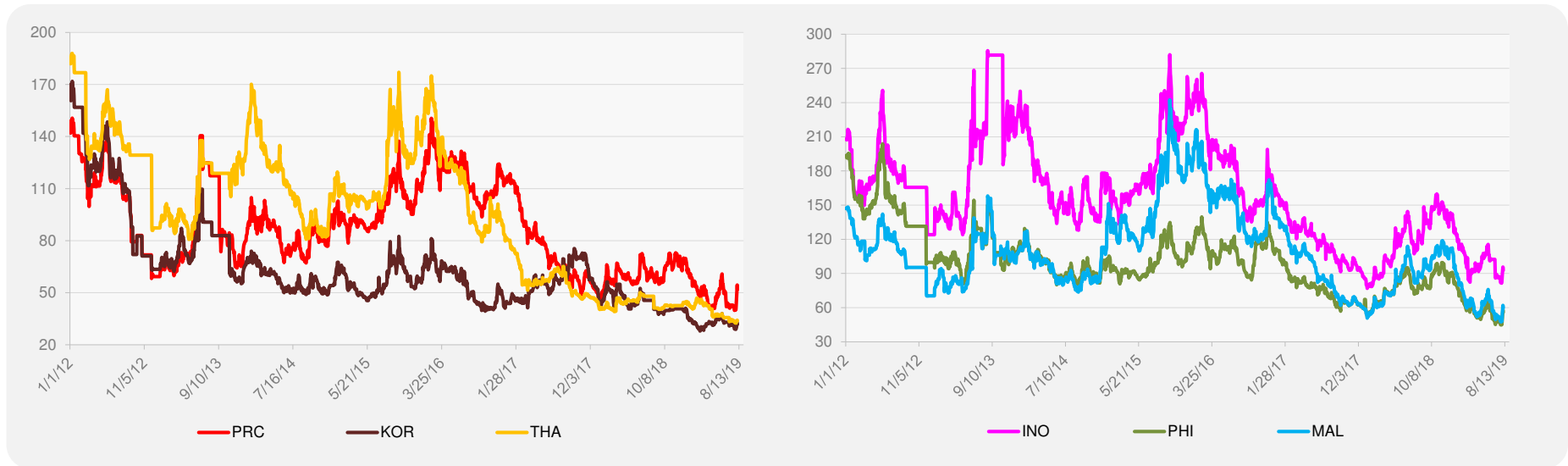


Source: Bloomberg.

### 5-YEAR LOCAL CURRENCY GOVERNMENT BOND YIELDS (%)



### 5-YEAR CREDIT DEFAULT SWAP<sup>1</sup>



<sup>1</sup> In USD and based on sovereign bonds.  
Source: Bloomberg.